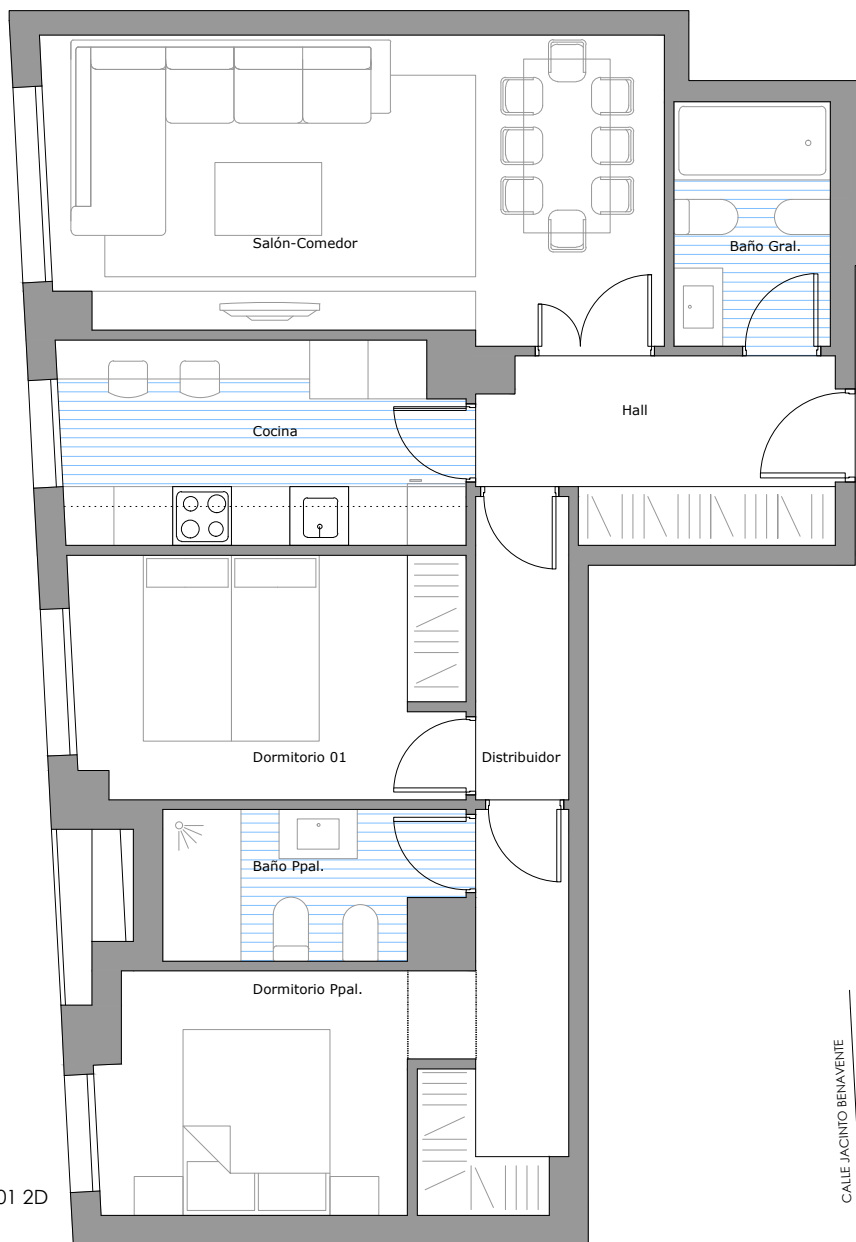
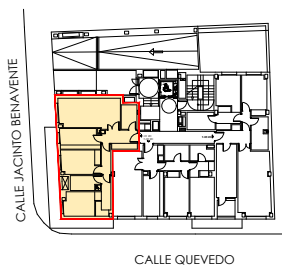


# TIPO 01



TIPO-01 2D

PLANTA BAJA



TIPO 1	(M <sup>2</sup> )
Total superficie útil	69,07 m <sup>2</sup>
Total sup. construida con comunes	91,70 m <sup>2</sup>

**297.230,00 € + IVA**



**GRUPO EM**  
INMOBILIARIA